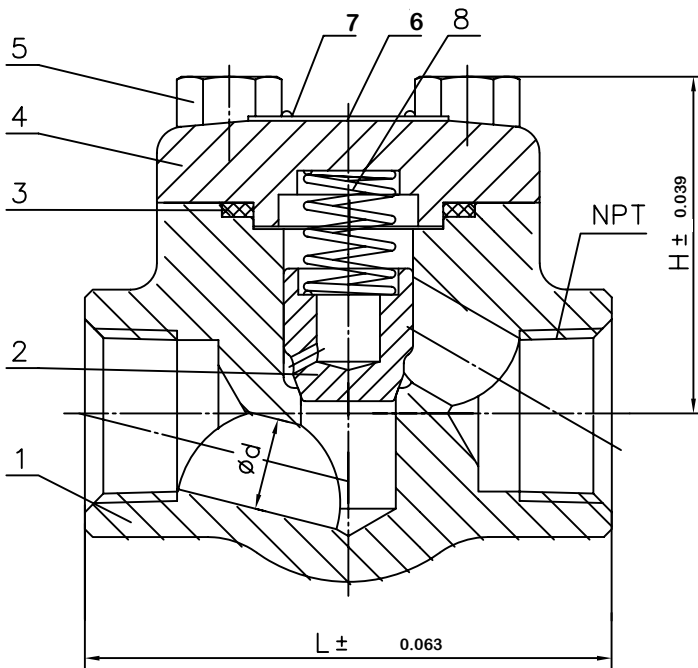


# Forged Steel Piston Check Valve Class 800 Conventional Port (NPT)

**Figure Number: B3674XUT**

Piston Check valve, Conventional Port,  
Bolted Bonnet, NPT Ends



2	6.30	2"	4.02	1.42				
1 1/2	5.71	1 1/2"	3.35	1.14				
1 1/4	4.49	1 1/4"	3.15	0.89				
1	3.94	1"	2.56	0.69				
3/4	3.15	3/4"	2.20	0.47				
1/2	2.87	1/2"	2.09	0.35				
3/8	2.87	3/8"	2.09	0.35				
1/4	2.87	1/4"	2.09	0.28				
inch								
NPS	L	NPT	H	d				
5	Bolt	ASTM A193 B7						
4	Bonnet	ASTM A105N						
3	Gasket	304+Graphite	8	Spring	SS304			
2	Disc	ASTM A276 420	7	Rivet	H62			
1	Body	ASTM A105N+STL	6	Nameplate	304			
No.	Name	Material	No.	Name	Material			

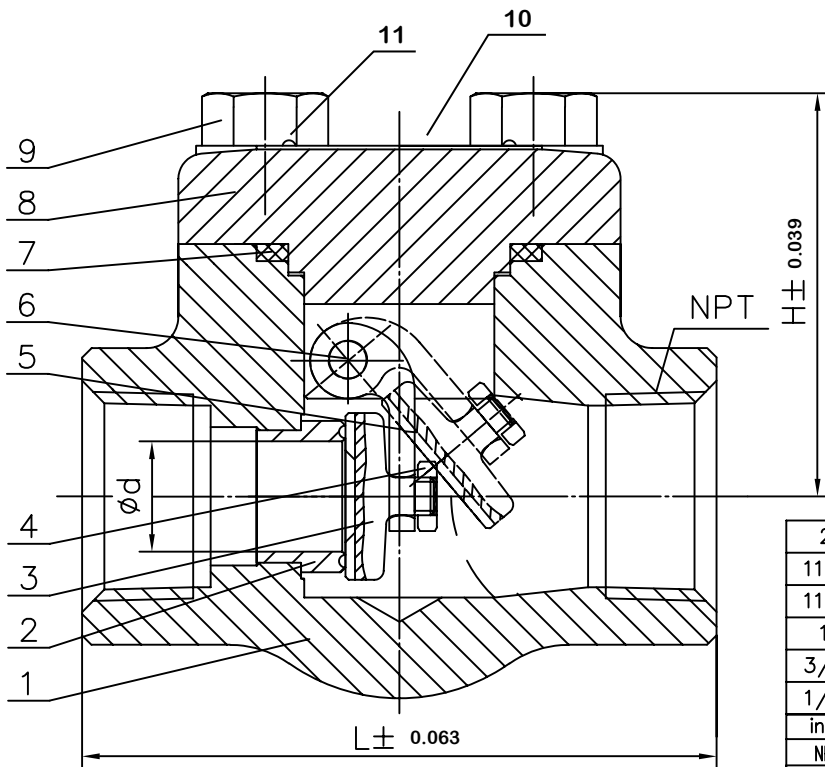
## Technical Requirements

1. Design & manufacture conform to API 602
2. Test & inspect conform to API 598
3. Face to Face dimension conform to manufacturer's standard
4. NPT ends conform to ASME B1.20.1

# Forged Steel Swing Check Valve Class 800 Conventional Port (NPT)

**Figure Number: B3675XUT**

Swing Check valve, Conventional Port,  
Bolted Bonnet, NPT Ends



2	5.12	2"	4.09	1.44				
11/2	4.72	11/2"	3.54	1.14				
11/4	4.49	11/4"	3.15	0.94				
1	3.94	1"	2.56	0.69				
3/4	3.15	3/4"	2.20	0.51				
1/2	2.87	1/2"	2.09	0.37				
inch								
NPS	L	NPT	H	d				
5	Arm	ASTM A351 CF8	10	Nameplate	11	Rivet		
4	Nut	ASTM A94 8	9	Bolt		ASTM A193 B7		
3	Disc	ASTM A276 420	8	Bonnet		ASTM A105N		
2	Seat	ASTM A276 410+STL	7	Gasket		304+Graphite		
1	Body	ASTM A105N	6	Pin		ASTM A276 304		
No.	Name	Material	No.	Name		Material		

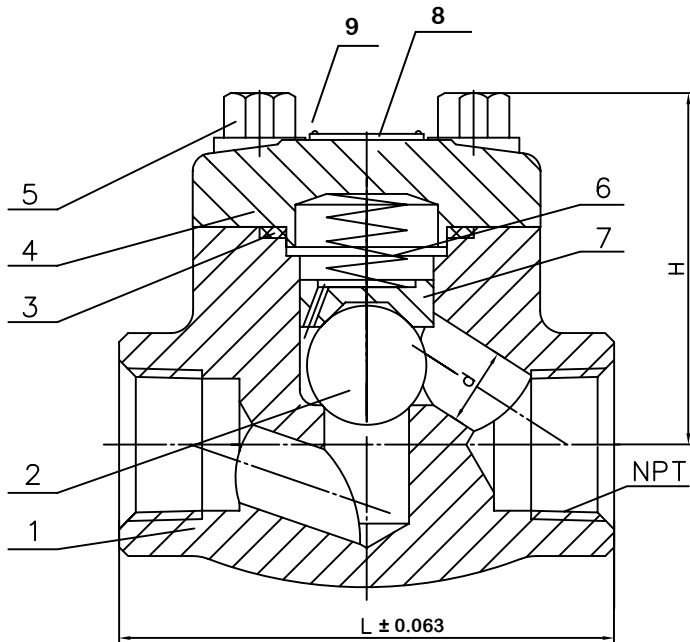
## Technical Requirements

1. Design & manufacture conform to API 602
2. Test & inspect conform to API 598
3. Face to Face dimension conform to manufacturer's standard
4. NPT ends conform to ASME B1.20.1

# Forged Steel Ball Check Valve Class 800 Conventional Port (NPT)

**Figure Number: B3673XUT**

Ball Check valve, Conventional Port,  
Bolted Bonnet, NPT Ends



2	6.30	2"	4.02	1.42				
1 1/2	5.71	1 1/2"	3.35	1.14				
1 1/4	4.49	1 1/4"	3.15	0.89				
1	3.94	1"	2.56	0.69				
3/4	3.15	3/4"	2.20	0.47				
1/2	2.87	1/2"	2.09	0.35				
3/8	2.87	3/8"	2.09	0.35				
1/4	2.87	1/4"	2.09	0.28				
inch								
NPS	L	NPT	H	d				
5	Bolt		ASTM A193 B7					
4	Bonnet		ASTM A105N		9	Rivet		
3	Gasket		304+Graphite		8	Nameplate		
2	Ball		ASTM A276 420		7	Ball seat		ASTM A276 410
1	Body		ASTM A105N+STL		6	Spring		SS304
No.	Name		Material		No.	Name		Material

## Technical Requirements

1. Design & manufacture conform to API 602
2. Test & inspect conform to API 598
3. Face to Face dimension conform to manufacturer's standard
4. NPT ends conform to ASME B1.20.1